



# INDOFINE Chemical Company, Inc.

121 Stryker Lane, Bldg. 30, Suite 1 • Hillsborough, NJ 08844 • U.S.A.

Phone: (908) 359-6778 • FAX: (908) 359-1179

website: [www.indofinechemical.com](http://www.indofinechemical.com)

e-mail: [chemical@indofinechemical.com](mailto:chemical@indofinechemical.com)

## CERTIFICATE OF ANALYSIS

Cat No.: D-501

Product: 2,2'-DIHYDROXYCHALCONE

CAS: [15131-80-3]

Lot Number: 0705051

Chemical Formula: C<sub>15</sub>H<sub>12</sub>O<sub>3</sub>

Molecular Weight: 240.25

Melting Point: 156-159°C

Appearance: Yellow crystalline powder

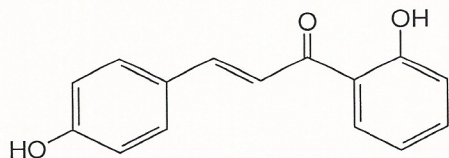
TLC: Chloroform:Methanol (9:1)

Solubility: Soluble in Chloroform

NMR Spectrum: Enclosed

Storage: Cool dry place

Purity (HPLC): 99.41%





# INDOFINE Chemical Company, Inc.

121 Stryker Lane, Bldg. 30, Suite 1 • Hillsborough, NJ 08844 • U.S.A.

Phone: (908) 359-6778 • FAX: (908) 359-1179

website: [www.indofinechemical.com](http://www.indofinechemical.com)

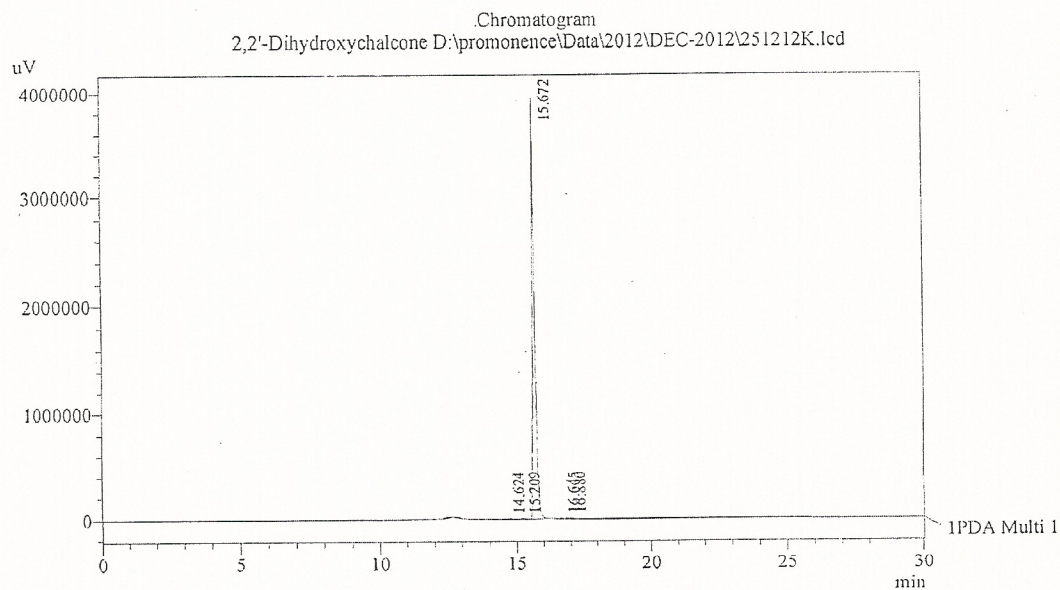
e-mail: [chemical@indofinechemical.com](mailto:chemical@indofinechemical.com)

## HPLC ANALYSIS

Acquired by : Sanjeev  
 Sample Name : 2,2'-Dihydroxychalcone  
 Sample ID : Lot No:-0705051  
 Injection Volume : 20 uL  
 Data Filename : 251212K.lcd  
 Method Filename : Linear Gradient.M.lcm

Catalog no.: D-501  
 Product name: 2,2'-Dihydroxychalcone  
 Lot No.: 0705051

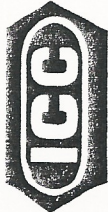
Column : LUNA C-18(2), (250mm x4.6mm 5.0µ)  
 Flow : 1.000 mL/min.  
 Mobile Phase : A(0.05% TFA in water) B(Acetonitrile)  
 0.01 90 10  
 12.0 10 90  
 20.0 10 90  
 23.0 90 10  
 30.0 90 10



1 PDA Multi 1 / 254nm 4nm

PeakTable

Peak#	Name	Ret. Time	Area	Area %	Relative Retention Time
1	RT:14.624	14.624	42451	0.17	0.93
2	RT:15.209	15.209	39244	0.16	0.97
3	2,2'-Dihydroxychalcone	15.672	24967466	99.41	1.00
4	RT:16.645	16.645	28295	0.11	1.06
5	RT:16.880	16.880	39347	0.16	1.08
Total			25116802	100.00	



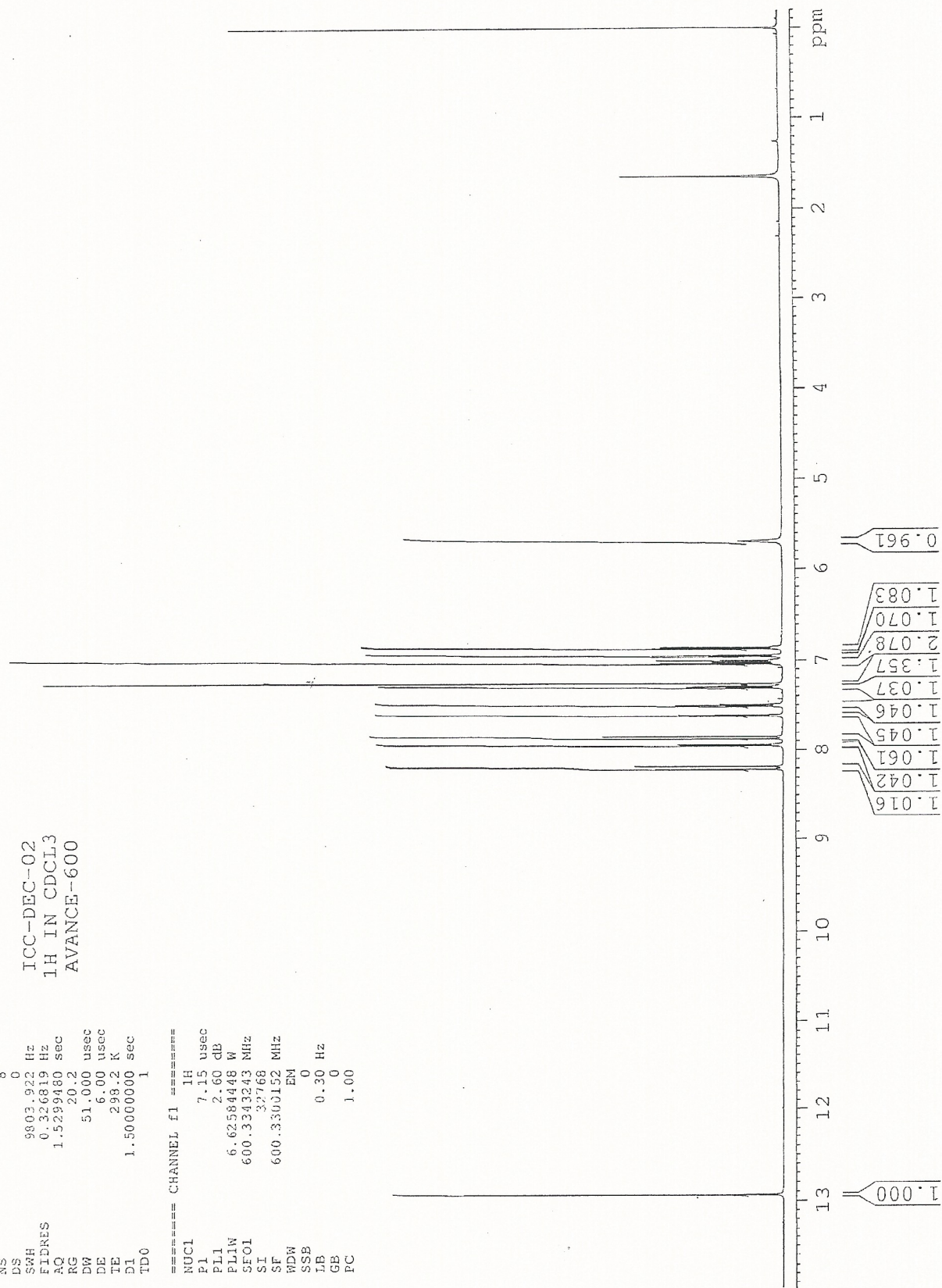
**INDOFINE Chemical Company, Inc.**  
 121 STRYKER LANE  
 BLDG. 90, SUITE 1  
 HILLSBOROUGH, NJ 08844

Catalog no.: D-501  
 Product name: 2,2'-Dihydroxychalcone  
 Lot No.: 0705051

SOLVENT CDCL3  
 NS 8  
 DS 0  
 SRH 3803.922 Hz  
 FIDNES 0.326819 Hz  
 AQ 1.5239480 sec  
 RG 20.2  
 DW 51.000 usec  
 DE 6.00 usec  
 TE 298.2 K  
 DI 1.50000000 sec  
 ID0 1

ICC-DEC-02  
 1H IN CDCL3  
 AVANCE-600

==== CHANNEL f1 =====  
 NUC1 1H  
 P1 7.15 usec  
 PL1 2.60 dB  
 PLW 6.62584448 W  
 SF01 600.3343243 MHz  
 SI 32768  
 SF 600.3300152 MHz  
 WDW EM  
 SSB 0  
 LB 0.30 Hz  
 GB 0  
 PC 1.00





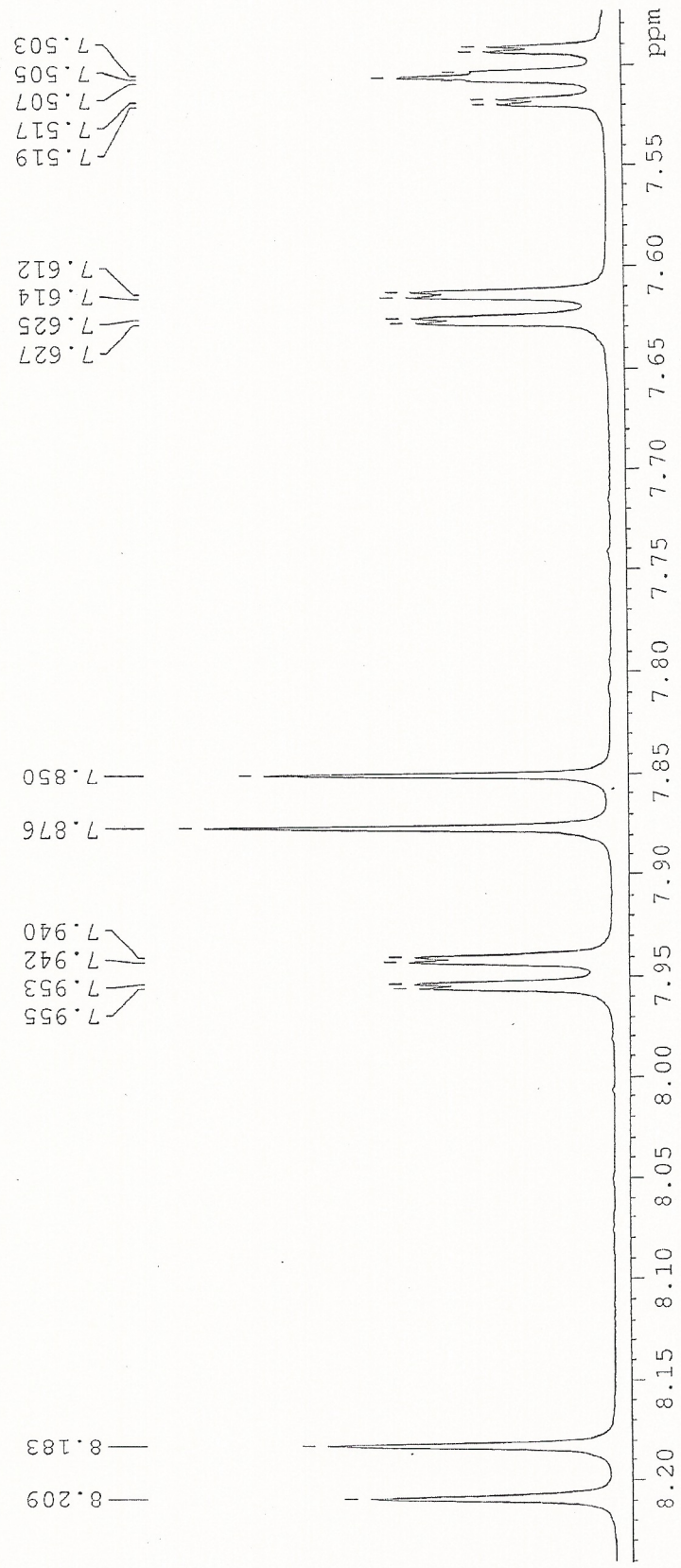
**INDOFINE Chemical Company, Inc.**  
121 STRYKER LANE  
BLDG. 90, SUITE 1  
HILLSBOROUGH, NJ 08844

Catalog no.: D-501  
Product name: 2,2'-Dihydroxychalcone  
Lot No.: 0705051

SOLVENT CDCL3  
NS 8  
DS 0  
SWH 9803.922 Hz  
FIDRES 0.326819 Hz  
AQ 1.5299480 sec  
RG 20.2  
DW 51.000 usec  
DE 6.00 usec  
TE 298.2 K  
D1 1.50000000 sec  
TDO 1

ICC-DEC-02  
1H IN CDCL3  
AVANCE-600

==== CHANNEL F1 =====  
NUC1 1H  
P1 7.15 usec  
PL1 2.60 dB  
PL1W 6.62584448 W  
SF01 600.3303243 MHz  
SI 32768  
SF 600.3300152 MHz  
WDW EM  
SSE 0  
LB 0.30 Hz  
GB 0  
PC 1.00





**INDOFINE Chemical Company, Inc.**  
 121 STRYKER LANE  
 BLDG. 30, SUITE 1  
 HILLSBOROUGH, NJ 08844

Catalog no.: D-501  
 Product name: 2,2'-Dihydroxychalcone  
 Lot No.: 0705051

SOLVENT CDCL3  
 NS 8  
 DS 0  
 SWH 9803.922 Hz  
 FIDRES 0.326619 Hz  
 AQ 1.5299480 sec  
 RG 20.2  
 DW 51.000 usec  
 DE 6.00 usec  
 TE 298.2 K  
 D1 1.5000000 sec  
 TDO 1

ICC-DEC-02  
 1H IN CDCL3  
 AVANCE-600

===== CHANNEL f1 =====  
 NUC1 1H  
 P1 7.15 usec  
 PL1 2.60 dB  
 P1LW 6.62584448 W  
 SFO1 600.3343243 MHz  
 SI 327.68  
 SF 600.3300152 MHz  
 WDW EM  
 SSB 0  
 LB 0.30 Hz  
 GB 0  
 PC 1.00

